

Year 2 Maths Pack -

Measurement: Time

Please Note: Extensions and ideas in the 'notes and guidance' and 'mathematical talk' areas are optional not essential.

New guidance when each part of the learning changes is included to assist parents with each lesson.

Guidance and Ideas For Parents

Find Durations of Time

Notes and Guidance

Children identify the start and end time of an event. They use these times to work out how long an event lasted. Children should understand this is the duration of an event. Children use individual clocks and number lines to help them work out the duration of an event. They can count in steps of 5 minutes to help them.

Mathematical Talk

What is the start time? What is the end time?

How can we show this on the clock?

How long did the event last?

How did you work out the duration?

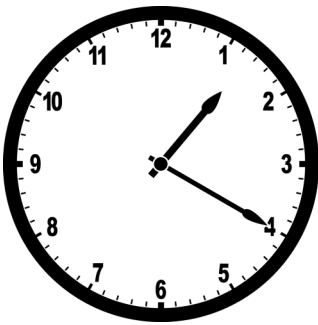
Are there any other methods for working out duration?

Lesson 1 Tuesday 19th May:

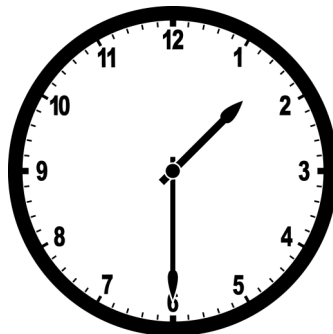
Activity 1

How much time has passed from the start to end time?

Start



End



Duration: _____

Start

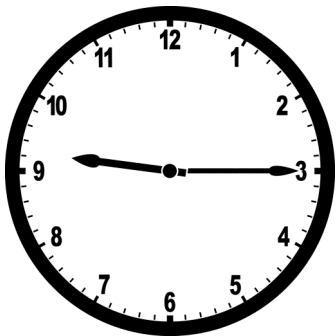


End

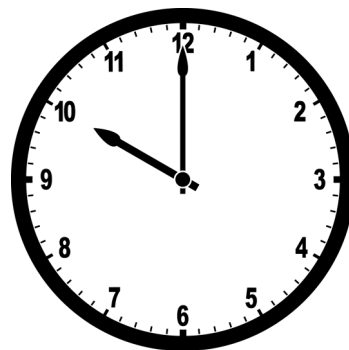


Duration: _____

Start



End



Duration: _____

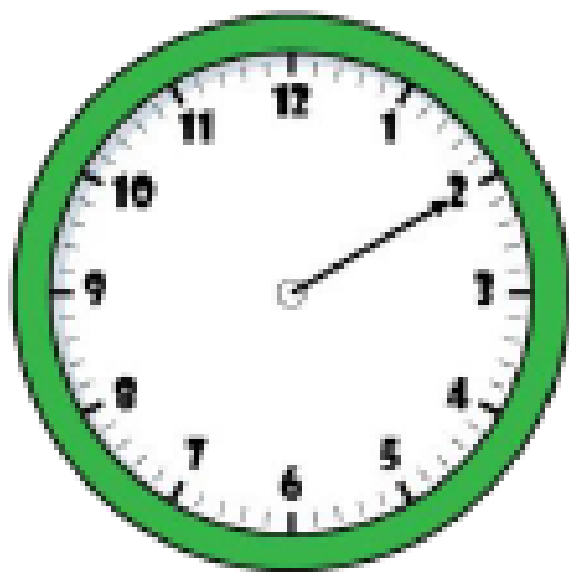
EXTENSION

Jack leaves school at quarter past 3 and arrives home at 5 to 4. How long does it take for him to get home?

Lesson 2 Wednesday 20th May:

Activity 1

Oh no! The hour hand has fallen off the class clock!



Start



End

The clock shows the start and end time of a film.

How long do you think the film lasted?

Activity 2

Aimee is planning her birthday. She wants to plan something to do from 9am to 5pm.

Here are the things she wants to do:

- Visit the zoo (3 hours)
- Go to Pizza Palace (1 hour and a half)
- Have breakfast (half an hour)
- Play party games (1 hour)
- Watch a film (2 hours)

Create a timetable for Aimee's day.
Compare it to your friends – is it the same?

Guidance and Ideas For Parents

Compare Durations of Time

Notes and Guidance

Children compare times using 'longer' and 'shorter'. They order times from longest to shortest and vice versa.

Children then compare durations of time taken by particular events.

They could explore ways to work out durations of time most efficiently, including using empty number lines and using their knowledge that there are 60 minutes in an hour.

Mathematical Talk

Which is longer 2 minutes or 1 hour?

How can you order the times?

How many minutes does each TV show last?

How can we count the minutes efficiently?

How much longer is than

How can we efficiently work out the length of time each person works?

Lesson 3 Thursday 21st May:

Activity 1

Circle the longest time.

1 hour

40 minutes

Half an hour

55 minutes

Three quarters of
an hour

35 minutes

Can you order the times from longest to shortest?

Activity 2

Use the table to complete the sentences.

TV Show	Starts	Ends
Pop World	3 o' clock	Twenty to 4
Animal Patrol	Half past 6	Five to 7
Super Cars	Quarter past 8	Five past 9

_____ is the shortest TV show.

_____ is longer than _____ and _____

EXTENSION

Joe works from half past 10 until 3 o' clock.

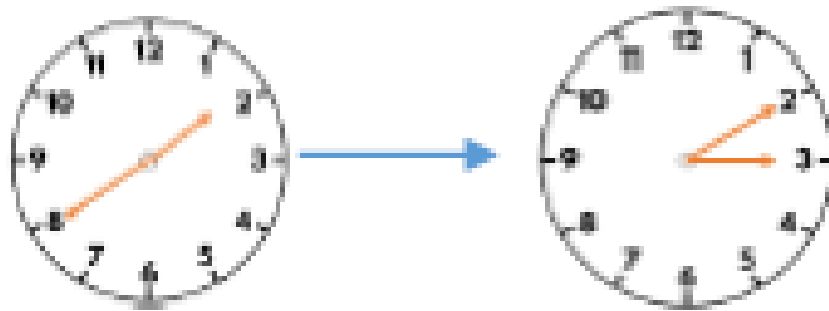
Emma works from 9 o' clock until half past 12

Who works the longest amount of time?

Lesson 4 Friday 22nd May:

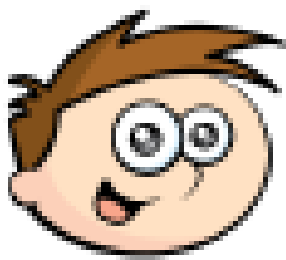
Activity 1

The clocks show the start and end time of the film Super Dog.



The film Crazy Cat starts at quarter past 1 and ends at quarter to 3

Teddy says,



Super Dog must be the longest film, because it ends the latest.

Do you agree with Teddy?
Explain why.

Activity 2

Rosie has an hour for her lunch break. If she takes 10 minutes to eat her lunch, does she have enough time to complete all of the playground activities?

Activity	Duration
Skipping	7 minutes
Ball skills	10 minutes
Treasure hunt	21 minutes
Trim trail	19 minutes

How do you know?