

# The Digraphs 'ph' and 'wh'



# The Digraph 'ph' for the /f/ Sound

The sound /f/ is not usually spelt 'ph' in short everyday words, such as fill, fun or fat.

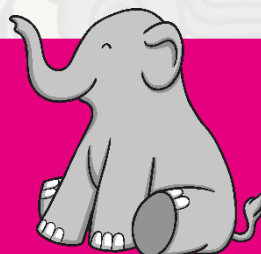
The digraph 'ph' makes the /f/ sound in these words...



**dolphin**



**phonics**



**elephant**



**alphabet**

# The Digraph 'ph' for the /f/ Sound



Can you write 'ph' in  
the air with your  
finger?

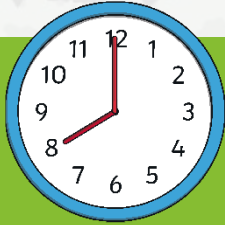


Can you write 'ph'  
with your finger on the  
back of your hand?

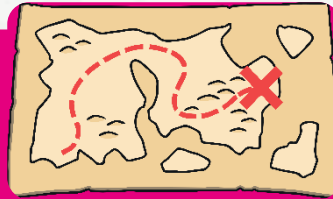
# The Digraph 'wh' for the /w/ Sound

The sound /w/ is not usually spelt 'wh' in words such as win, wish or window.

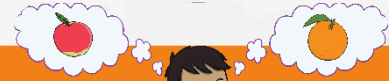
The digraph 'wh' makes the /w/ sound in these words...



**when**



**where**



**which**



**wheel**



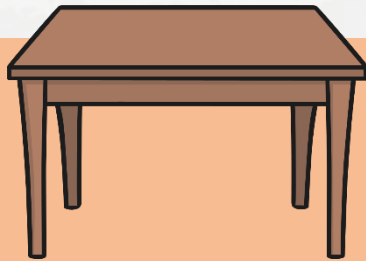
**while**



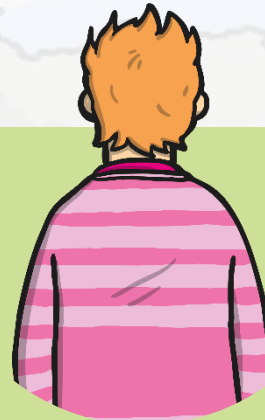
**white**



# The Digraph 'wh' for the /w/ Sound



Can you write 'wh' with your finger on your table or on the carpet?



Can you write either 'ph' or 'wh' on a partner's back?

Can they tell which digraph you have written?

Here are this week's spellings to practise.

dolphin

where

alphabet

which

phonics

wheel

elephant

while

when

white



twinkl