



Learning how to learn

An assembly about ELLI: 26th April 2021

What should we put into a toolbox for learning?



What things do we need to learn successfully?

Did you put these things in?



What else is needed?

Scientists tell us that to be a successful learner, we also have to have the right attitudes and characteristics in our toolboxes.



What attitudes and characteristics do you think we need?

creativity

being
interested

deep-thinking

curiosity

risk taking

focus

friends

positive
attitude

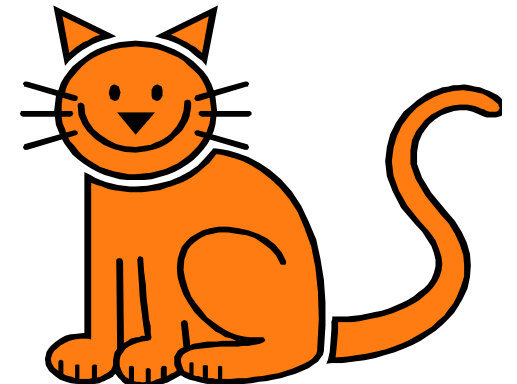
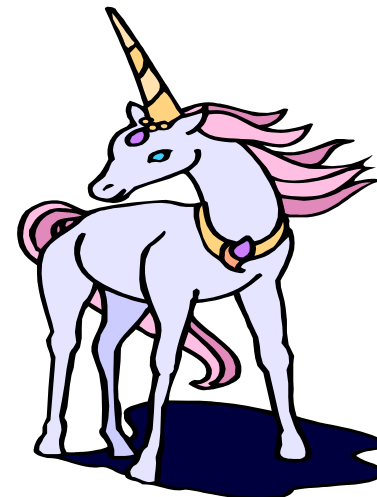
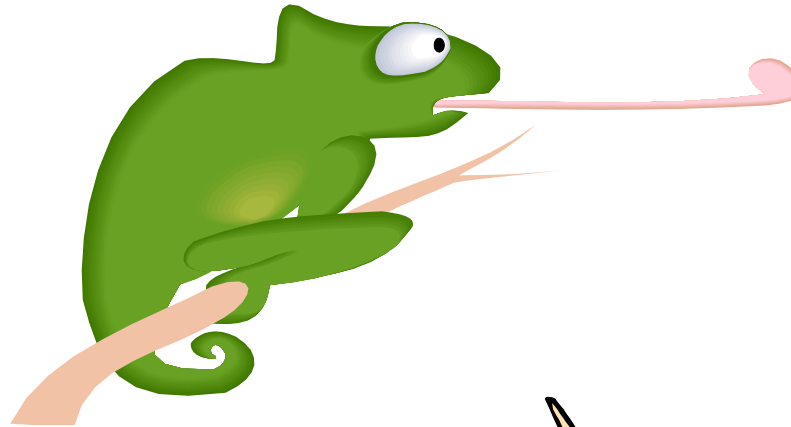
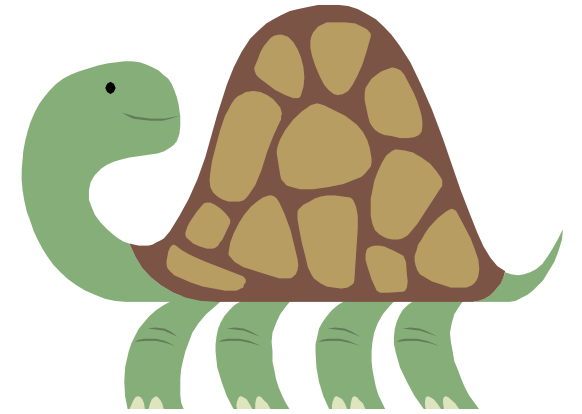
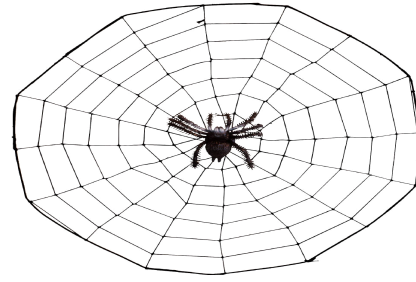
resilience

These learning animals can help us with our learning too.

Each animal is good at doing something special that helps it to learn.

We are going to find out about each of these animals in more detail this year.

Which ones can *you* name?



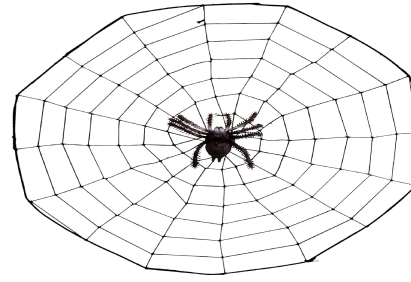
Did you remember
all of them?



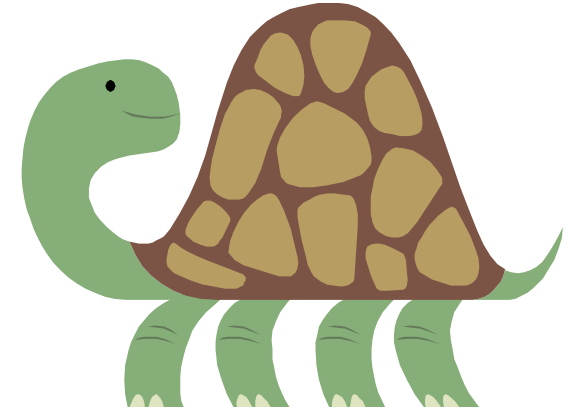
Busy Bee



Wise Owl



Connecting Spider



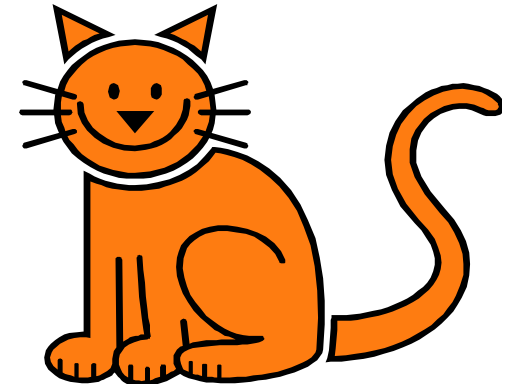
Resilient Tortoise



Changing
Chameleon



Magical Unicorn



Curious Cat

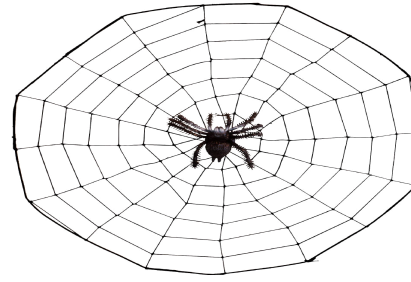
What does each animal represent?



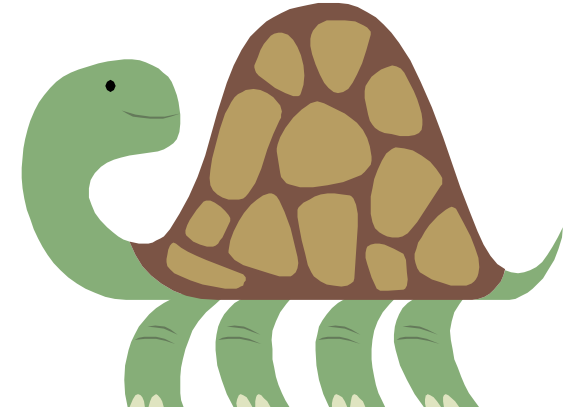
Working
relationships



Strategic
Thinking



Meaning-making



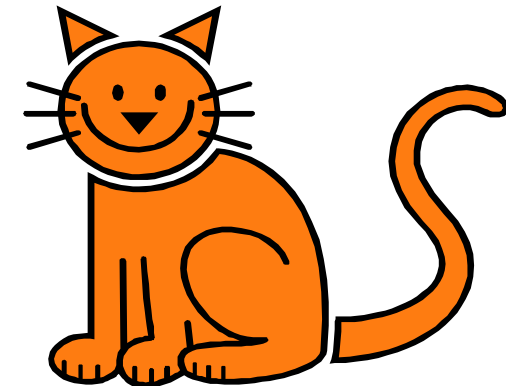
Resilience



Changing and
learning



Creativity



Curiosity

Which animal would help you to....

...keep on going even when things aren't easy?

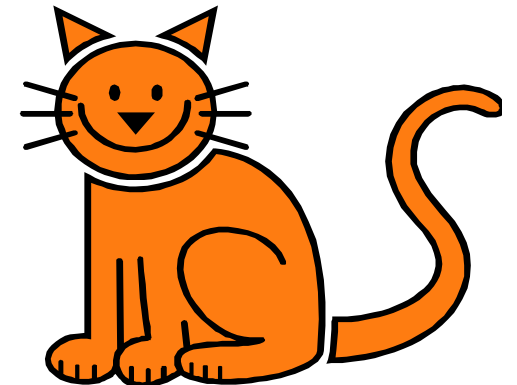
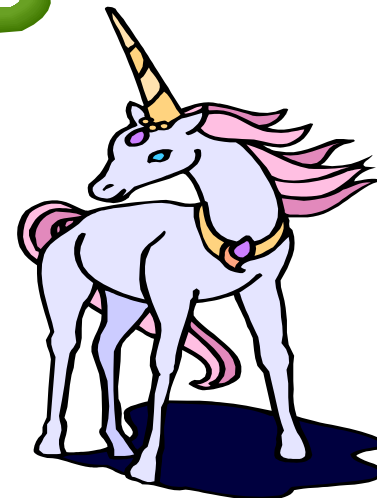
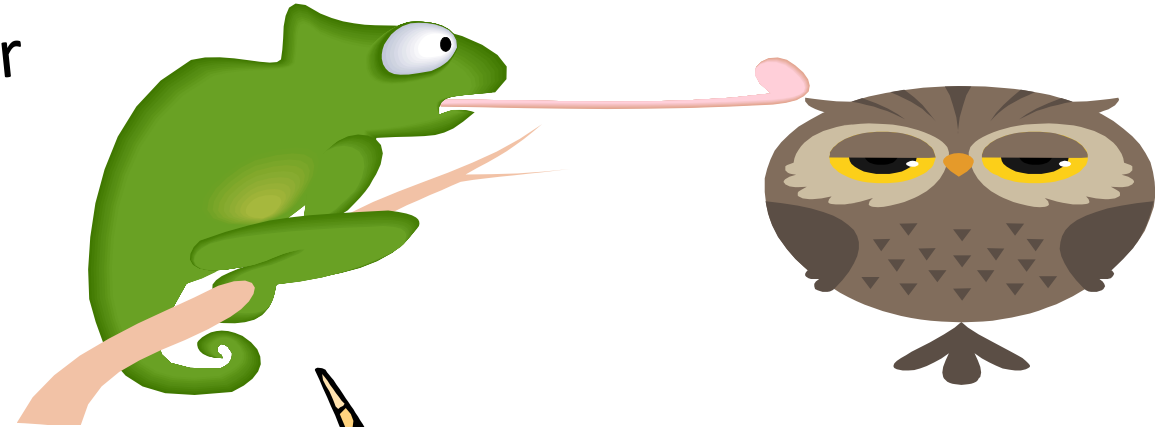
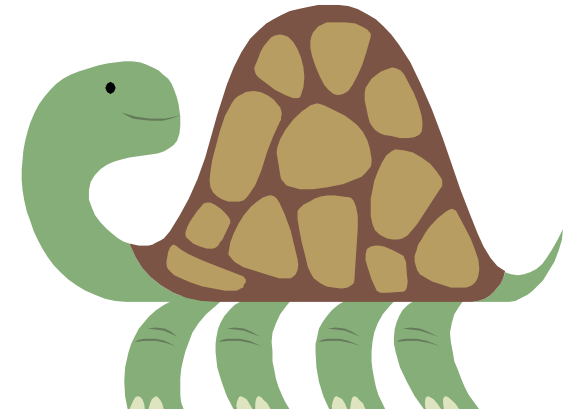
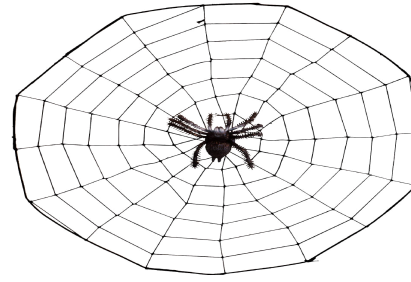
...link your ideas together?

...see the bigger picture?

...know that you can get better at things if you try your best?

...take a risk, or let your ideas bubble out?

...ask lots of questions?

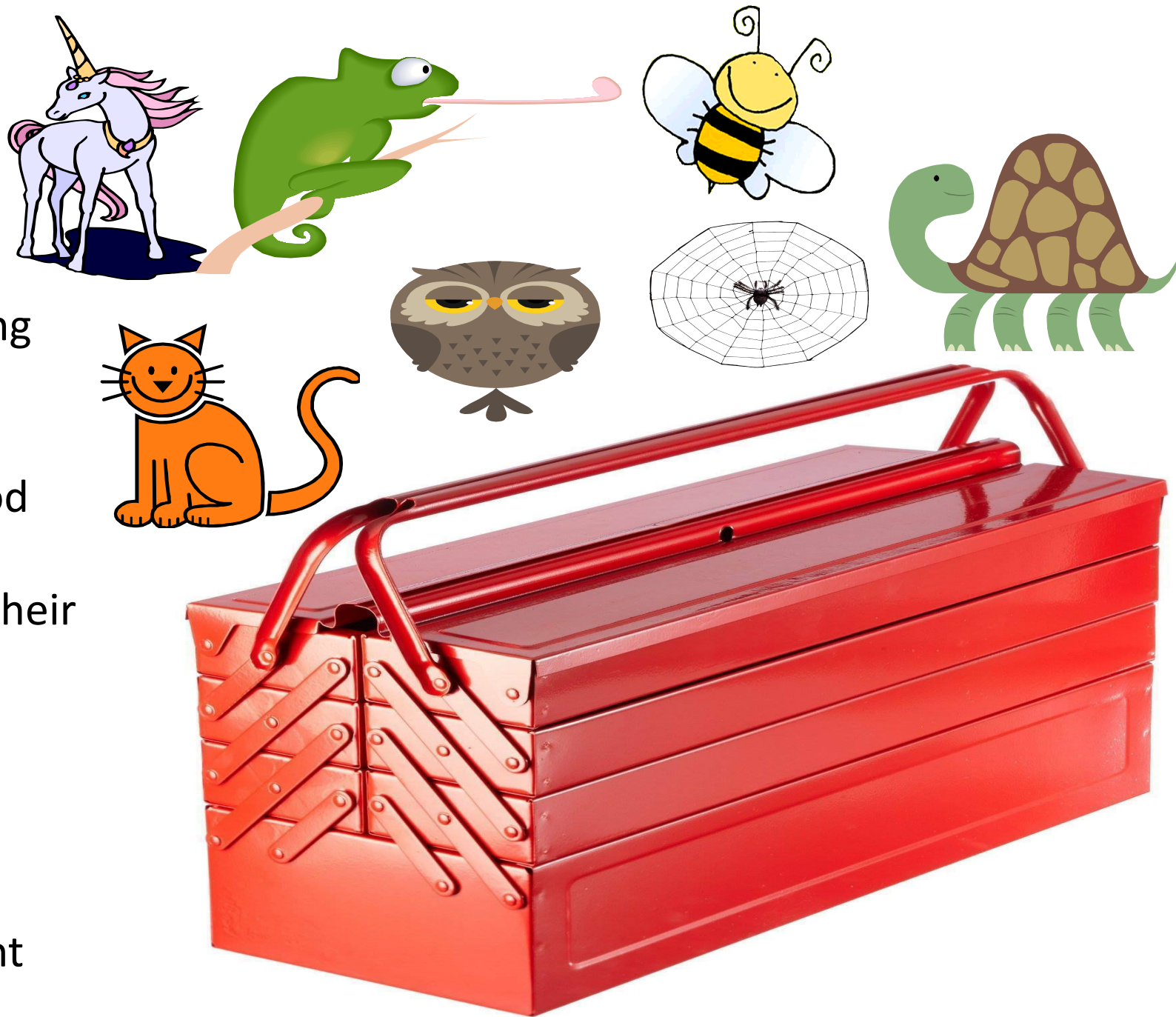


ELLI

These are the seven ELLI animals.
ELLI stands for the Effective Lifelong
Learning Inventory.

This means, they are the tools good
learners will have in their learning
toolbox throughout the whole of their
lives.

ELLI is used by children in schools,
students in universities and even
business people working for big
companies (they just have different
names for them!).



Learning Relationships

Next week, we're going to find out more about the Busy Bee.

